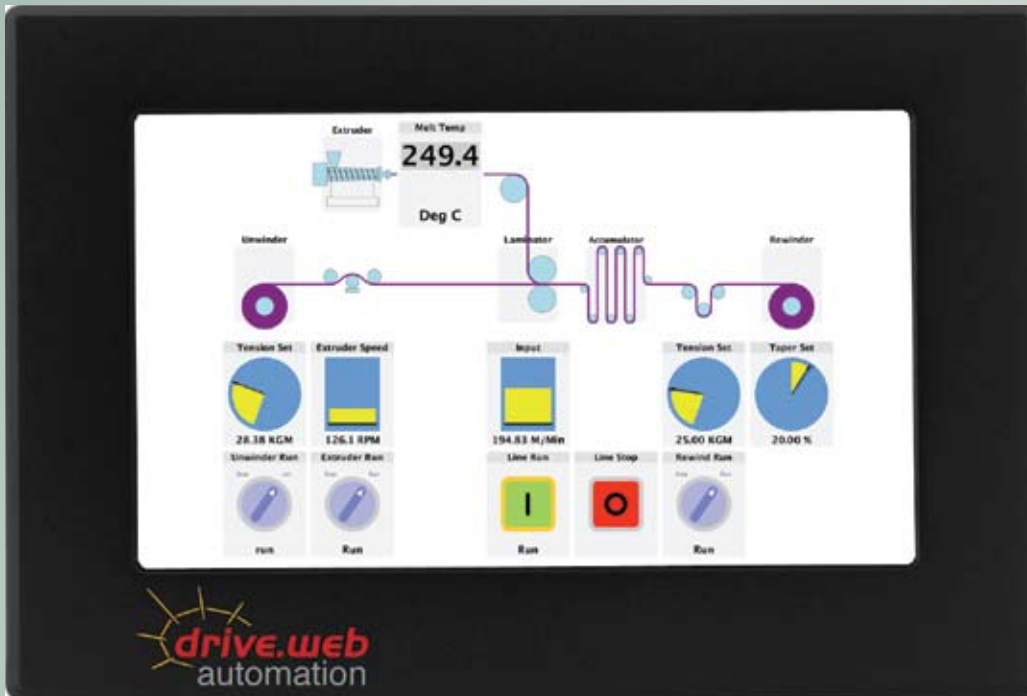


NEW! *savvyPanel touch*

Industrial Touch Screen Stations



- High resolution
- Full color
- Competitive price
- Easy set up
- **drive.web** native
- Splashproof front
- Distributed control

dw230 ... 7" *savvyPanel touch*

- High Resolution 1024 x 600 pixels
- Compact size: 206 x 139 x 28 mm
- Mounting hole: 195 x 115 mm
- Bright, full color, long life display
- Build cost effective large displays with multiple screens
- Provide password protection at multiple levels

very smart automation!

savvy programming

- No separate programming required.
- The **savvyPanel** display configuration resides in the **drive.web** drives or automation controllers.
- Everything is set up and accessed from the **drive.web** network using the intuitive **savvy** tools.

Key Features:

- IP65, NEMA 4 splashproof from the front
- IP 20 from the back
- **drive.web** Ethernet port 10/100baseTX
- USB port for industrial mouse interface
- Power supply 6-40VDC, 5W
- Working Temperature: -20°C to 70°C

Ethernet Networking Options:

- Use with a LAN switch in systems of any size
- Connect directly to any single **drive.web** drive or automation controller without a switch.

Smart, touch screen operator station technology

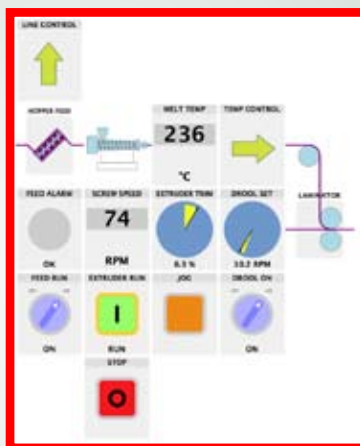
- Runs native on a **savvyPanel touch** high resolution, touch screen display
- Also runs on any full featured, touch screen PC or on iOS devices (iPad, iPhone, iPod touch, etc.)
- Extensive library of pushbuttons, switches, meters, indicators, lamps, buzzers, etc.
- Extensive library of “tiles” to build smart machine & process graphics.
- Machine graphic “tiles” can be linked to detail control screens.
- Full **savvyPanel** configuration is stored in the **drive.web** devices for instant WiFi “roaming” access.
- Supports multiple screens with multiple pages.
- Provides hierarchal access to system groups, individual systems & multiple operator levels.
- Powerful multi-level password protection.

Example - Extrusion Coating Line



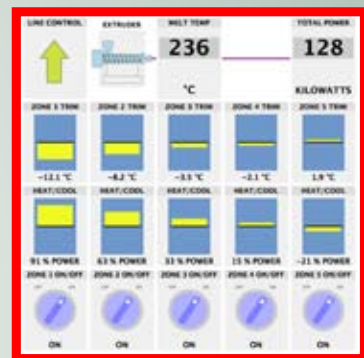
Master System Control Station

Easily build graphics & controls linked to your drives or process control system.



Operator Screen

Touch a graphic tile to drill down to the detail screen



Total Control

Touch the TEMP CONTROL tile to drill down to the heater controllers.
Touch the MELT TEMP tile to set the master temperature setpoint.



savvyPanel app for iOS

Go mobile - Get secure machine access anywhere
Try the live demo now!

Download **savvyPanel** free from the Apple App Store & run a real, live drive system in Maryland!

- Touch the “Roll Change” button to reset the length to zero
- Turn on all the section “On/Off” switches
- Touch the “Line Start” button - see the line run its auto cycle.
- Touch the “Set Speed” indicator to change the line speed
 - Touch the parameter name to get info
 - Touch the square display symbol to close the setter

drive.web smart automation technology

Bardac Corporation, 40 Log Canoe Circle, Stevensville, MD 21666 USA
Phone: +410-604-3400, Toll Free 888-667-7333

bardac.com